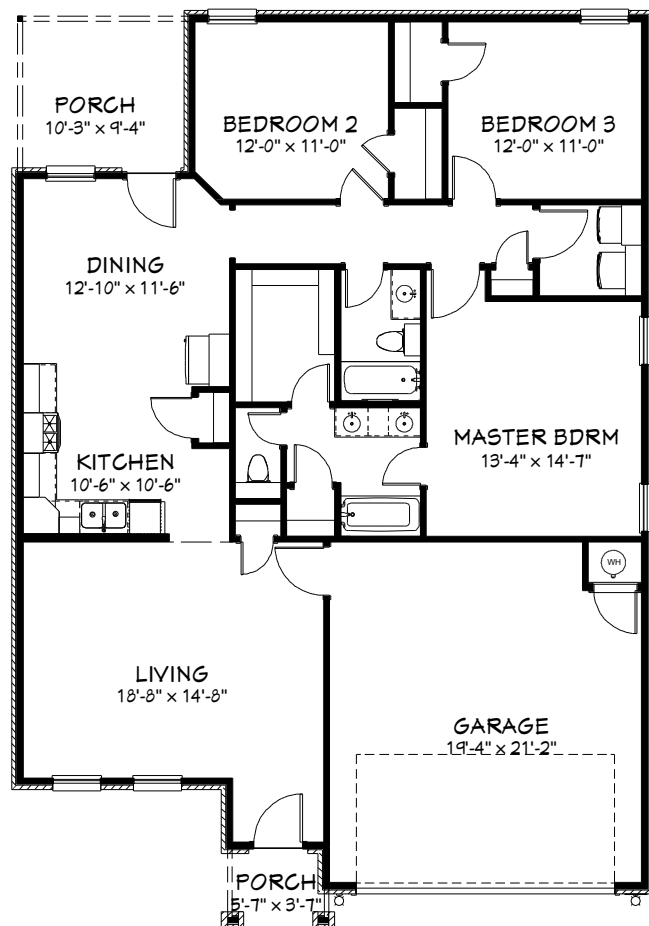


Ashby



Ashby Elevation A

- 1536 Ft. of Living Area
- 3 Bedrooms, 2 Bathrooms, 2 Car Garage
- Large Open Kitchen
- Central Utility Room
- Large Walk In Closet
- His and Her Sinks
- Large Bedrooms
- 9 Ft. Ceilings Throughout



Prices, plans, features, options and co-broke are subject to change without notice. Additional restrictions may apply. Square footages are approximate. Model homes include upgrades that may be available for an additional charge. Options and upgrades shown may require an additional charge. Images are architect renderings and may differ from home as built. Plans are subject to availability and feasibility. Please see a sales representative for more information. Rev 07/12/2016 © Mystique Homes 2016