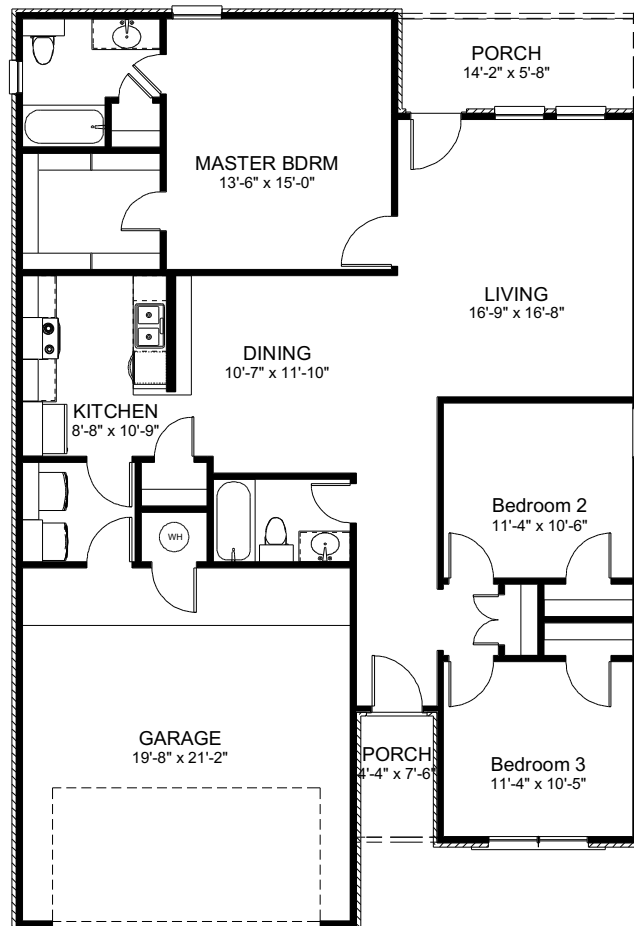


Addington



Addington Elevation A

- 1417 Ft. of Living Area
- 3 Bedrooms, 2 Bathrooms, 2 Car Garage
- Open Concept Kitchen
- Large Island
- Isolated Master Bedroom
- Large Walk In Closet
- Covered Back Porch
- 9 Ft. Ceilings Throughout



Prices, plans, features, options and co-broke are subject to change without notice. Additional restrictions may apply. Square footages are approximate. Model homes include upgrades that may be available for an additional charge. Options and upgrades shown may require an additional charge. Images are architect renderings and may differ from home as built. Plans are subject to availability and feasibility. Please see a sales representative for more information. Rev 07/12/2016 © Mystique Homes 2016